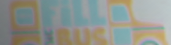


Shine On



Southwestern  
Ontario



Presented by  
mainstreet

Legate INJURY  
LAWYERS

pushthebus

# Y IMPACT

*A twice-yearly update on how you're helping communities shine*

---

## Greetings from the Y's development team!

Teamwork makes the dream work. Our Centre Branch YMCA crew (Silvano, Ash, Bella, and Travis, pictured above) was one of many who brought their muscle to Push the Bus this summer, pushing a real bus across the finish line and raising funds to send kids to YMCA Camp.

No matter how you support the Y – from sponsoring or attending a YMCA event, to payroll giving, to making a holiday donation each year – **know that we're incredibly grateful.**

*Learn more about our donors' amazing generosity in 2025 in support of Push the Bus, and its parent campaign YMCA Fill the Bus, on page 3!*

## *Honouring Janice Strickland*

### *Jordan's Run the Runway*

---

At the Y's 2025 Annual Community Gathering, we were thrilled to present Janice Strickland with the King Charles III Coronation Medal for her tireless efforts to ensure inclusiveness for all in memory of her son, Jordan.

You can find the event video on YouTube @YMCAofSouthwesternOntario. Look for the video called **YMCASWO Annual Community Gathering 2025**. Advance the recording to 18:18 to view Janice's medal presentation!

You can also view the video here:

[https://youtu.be/uW\\_9ltT16UU?t=1098](https://youtu.be/uW_9ltT16UU?t=1098)



*King Charles III Coronation Medal recipient Janice Strickland (centre), with our CEO Andrew Lockie and VP Development Christina Harley*

## *A Jumping-Off Point for Summertime Adventures*

### *YMCA Camp Queen Elizabeth*

---

A new chapter began at CQE this summer with the help of our awesome donors, as a new dock system was installed. After years and years of summer fun, it was time to retire our old docks.

The dock replacement is part of CQE Elevate – a \$1 million fundraising campaign to revitalize CQE in honour of the camp's 75th birthday in 2028!

Want to learn more about CQE Elevate? Visit:

[www.ymcaswo.ca/cqe-elevate](http://www.ymcaswo.ca/cqe-elevate)



*Summer 2025 campers enjoy the new docks at CQE*

*Our YMCA core values:*

**Inclusiveness • Honesty • Responsibility • Respect • Caring**

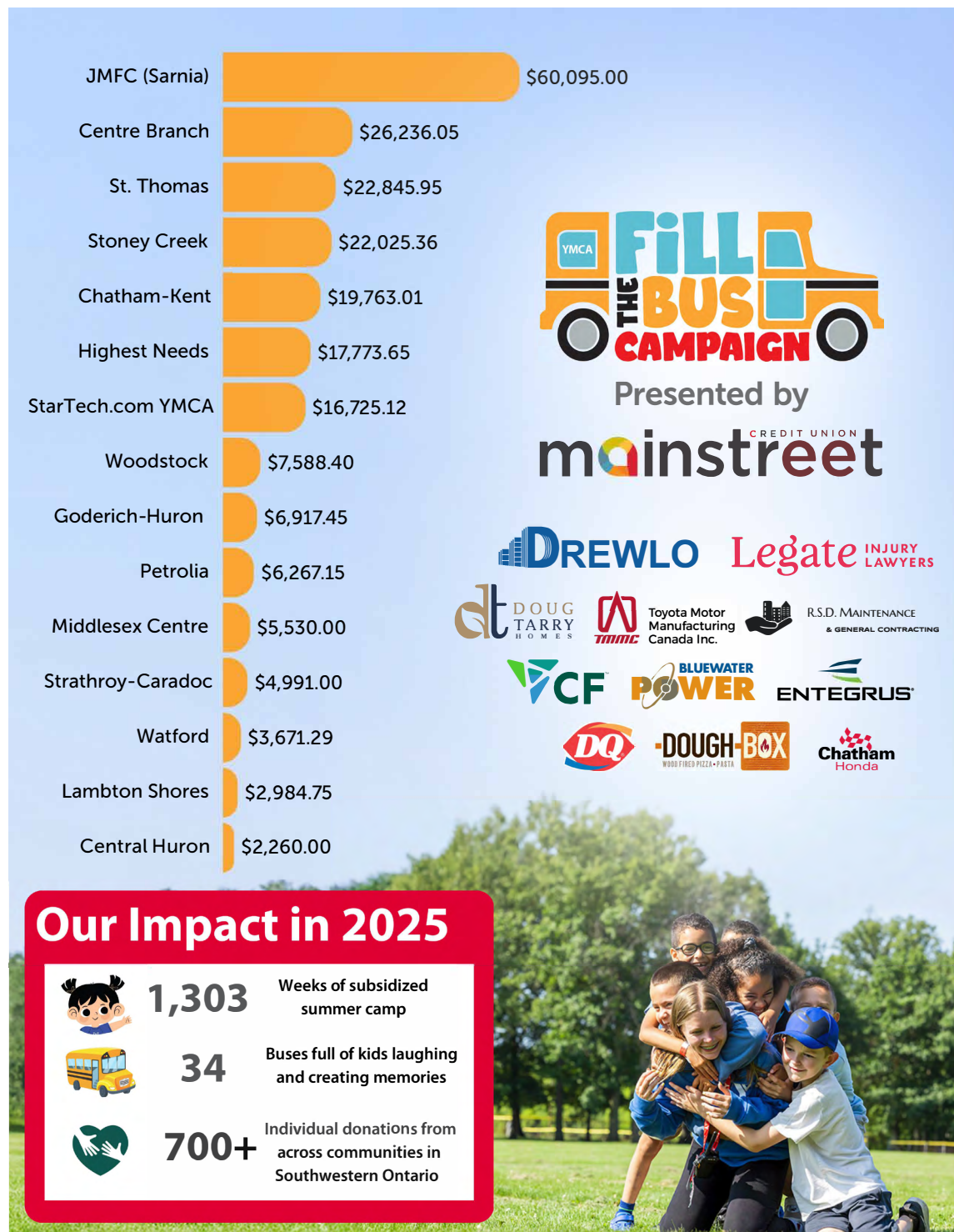


# Your Impact: 2025 YMCA Fill the Bus Campaign

## Presented by Mainstreet Credit Union

With your wonderful generosity from March to July, we raised well over \$200,000 for YMCA Camp experiences through the Fill the Bus Campaign (including Push the Bus).

That's 1,303 weeks of subsidized summer camp for kids across Southwestern Ontario, so they can discover the fun, friendship, and adventure of camp!



# Breaking the Silence: An Educator's Impact

## Care for Newcomer Children Program

---

In our Care for Newcomer Children Program, we often welcome children who are just beginning to develop their vocabulary and comprehension skills – many of whom have never been separated from their parents before, and may feel a little nervous about this.

One child in particular had been attending preschool for some time but had yet to speak in class. He preferred to observe from a distance, sitting quietly while being gently encouraged to engage. His teachers provided patience, support, and a welcoming space, never forcing participation but always offering inclusivity. Then a breakthrough moment happened.

At the end of the day, as always, his teacher said goodbye. He walked out of the room with his mother, giving a small wave. But then – he suddenly stopped. **He turned around, ran back at full speed, and wrapped his teacher in the biggest hug. With a beaming smile, he said, "Bye, teacher."**

It was a moment that moved everyone. His mother, a newcomer to Canada learning English alongside her child, was overcome with emotion. His teacher, who'd been hoping for this connection, felt the deep impact of her patience and dedication. And most importantly, this child – who'd stayed silent for months – spoke and expressed his feelings in the most beautiful way.

This is the power of education, patience, and inclusivity. This is the impact of an educator.



### Connect with us!

---



@YMCAofSWO



@ymcaofsw



ca.linkedin.com/company/ymcaofsw

YMCA of Southwestern Ontario  
165 Elmwood Ave East  
London, Ontario N6C 0A8  
519-907-5500 x 1152  
donations@swo.ymca.ca  
www.ymcaswo.ca



Shine On